



INTRODUCING

CANYON STEPS

Precast concrete stacking steps with the look of authentic weathered stone

Ideal for inclines,
hills and banks



Hollow for ease
of installation

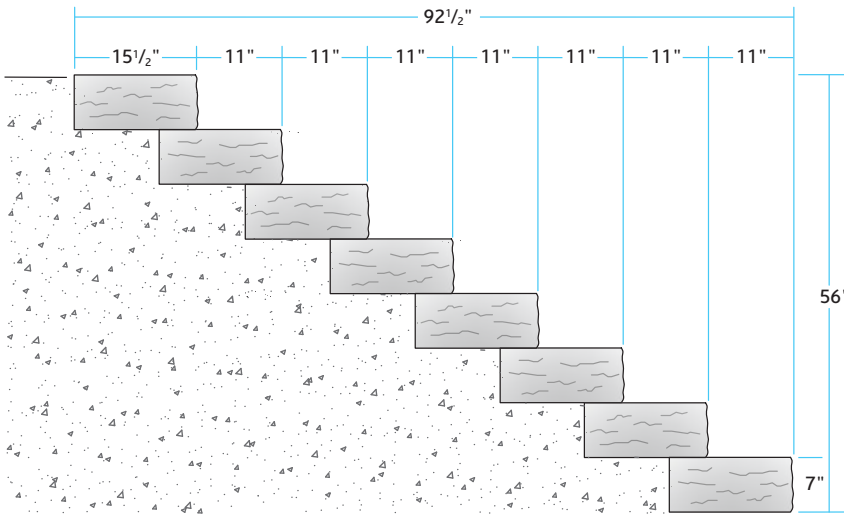


Available in two colours

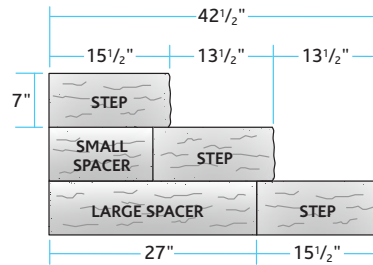
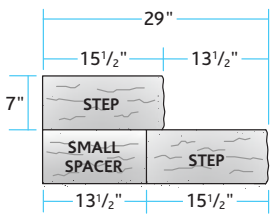
Why choose precast concrete
over natural stone?

- Significant cost savings
- Less than half the weight of natural stone
- Stackable and easy to install
- Preselected shapes and lengths and incremental size options provide more consistent measurements

Steps are closed on all sides,
perfect for hills and banks.



Create 2 and 3 step sets with
spacer units.



Beautiful & versatile

WIDTHS | 3', 4', 5' and 6', widths

HOLLOW | closed on all sides

RISE | Standard rise is 7"

STACKABLE | Up to 3 steps high
with spacer units. Stacking height
is unlimited when built into an
inclined landscape.

STEPS

| | | |
|-------------------|---------|-------------------|
| 3' x 15 1/2" x 7" | 190 lbs | 6 pieces per skid |
| 4' x 15 1/2" x 7" | 240 lbs | 6 pieces per skid |
| 5' x 15 1/2" x 7" | 290 lbs | 6 pieces per skid |
| 6' x 15 1/2" x 7" | 340 lbs | 6 pieces per skid |

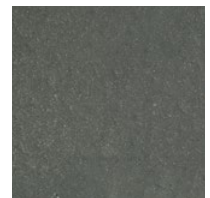
SPACER UNITS

| | | |
|-----------------------|--------|--------------------|
| 4 1/2" x 13 1/2" x 7" | 40 lbs | 20 pieces per skid |
| 4 1/2" x 27" x 7" | 75 lbs | 10 pieces per skid |

COLOURS | Sunset Buff, Ebony



SUNSET BUFF



EBONY



TOLL FREE 1-877-265-6590
edsconcrete.com



AVAILABLE AT:

STRATFORD | Head Office
1266 Erie Street, Stratford
ON Canada N4Z 0A1
T 519-271-6590

NORWICH
773098 Oxford Road 59
Norwich ON Canada N0J 1P1
T 519-468-6979